



**DEPARTMENT OF
HEALTH**
AND HOSPITALS

Transforming Health Care in Louisiana

A Look Back and a Path Forward

Bruce D. Greenstein, Secretary



Today's Discussion



- Big Bets Paying Off
 - BAYOU HEALTH
 - Behavioral Health Partnership
 - Health Information Technology
 - Birth Outcomes
 - Children's Dashboard
 - Right-balancing Community Based Care
 - Government Efficiency
- Investments for the Future
 - New MMIS
 - New Eligibility System
 - Fighting Fraud and Abuse
- Call to Action



Application For

LaCHIP

Louisiana Children's Health Insurance Program



>>> medicaid

Application For

LaCHIP

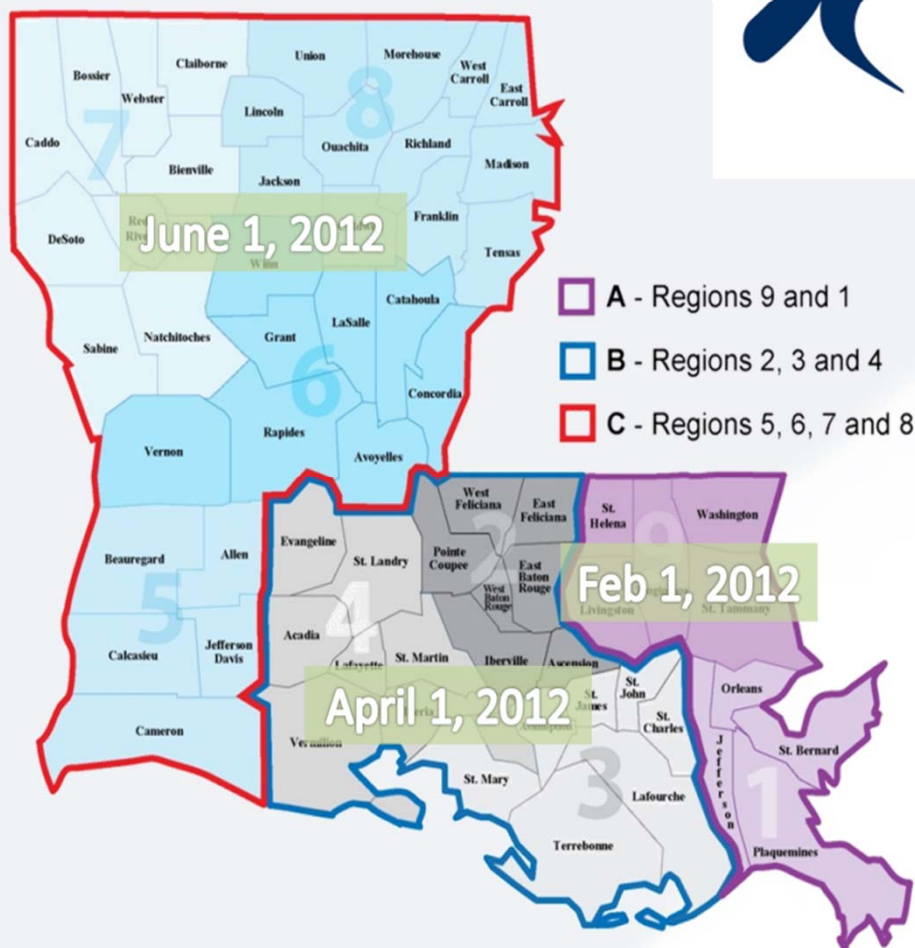
Louisiana Children's Health Insurance Program

Application
Louisiana M



New Era of Medicaid in Louisiana

Launched Feb. 1st



Prepaid Plans



Shared Plans



Addressing three Concerns

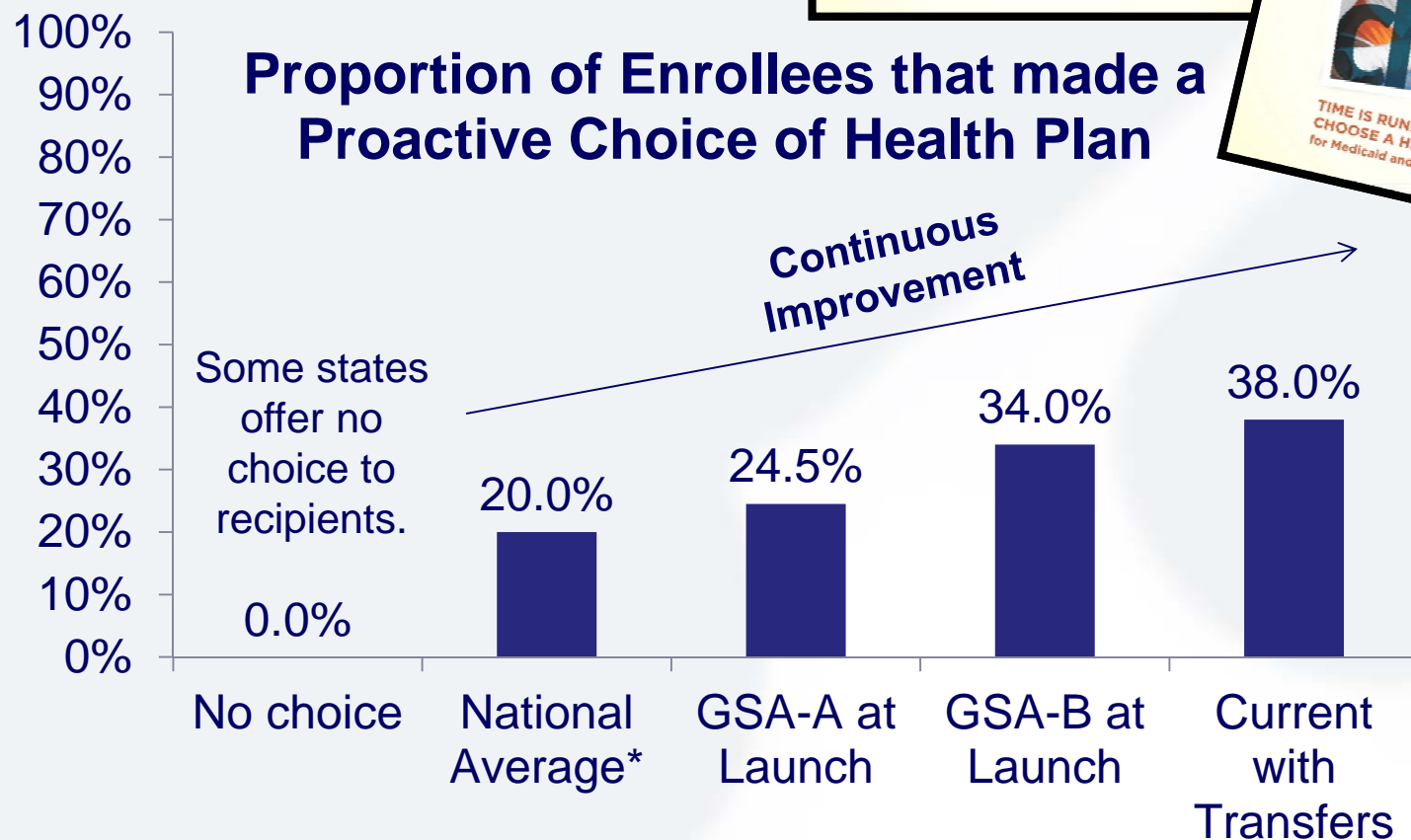
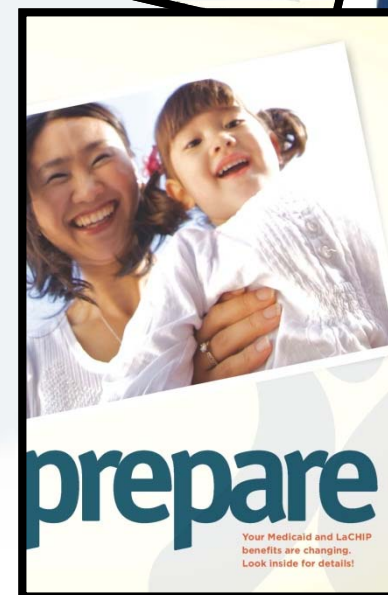
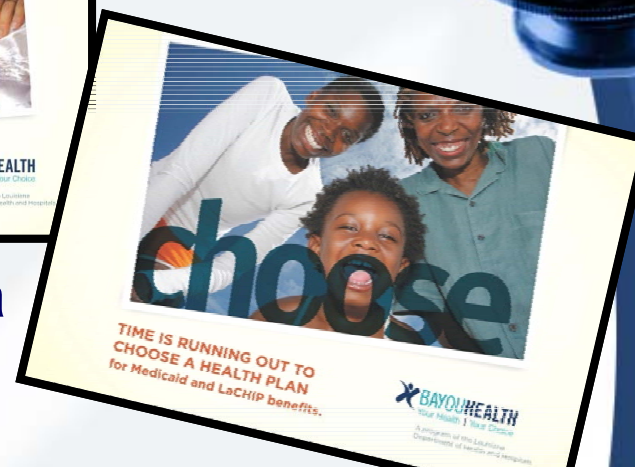
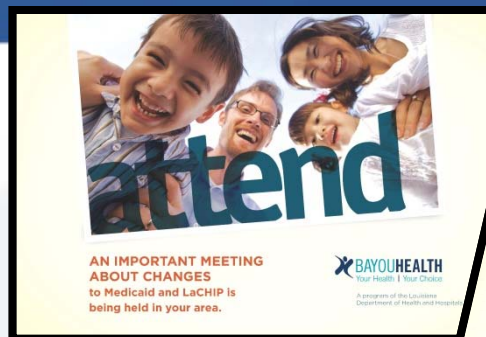
Three criteria for success:

1. Enhancing consumer engagement
2. Improving provider registry integrity
3. Resolving systems issues regarding provider payments



1. Consumer Engagement

Heavy emphasis on
consumer engagement.



*According to anecdotal vendor experience

2. Provider Registry

- New tool – did not exist in legacy Medicaid
- Contains more than 33,553 unique records, each having 78 data fields

DHH is confident that the data is substantially complete and accurate.

Provider Last Name:

Hospital/Organization Name:

Primary Care Provider Only: ☐

Health Plan:

Provider Specialty 1:

Provider Specialty 2:

Provider Specialty 3:

City:

Parish:

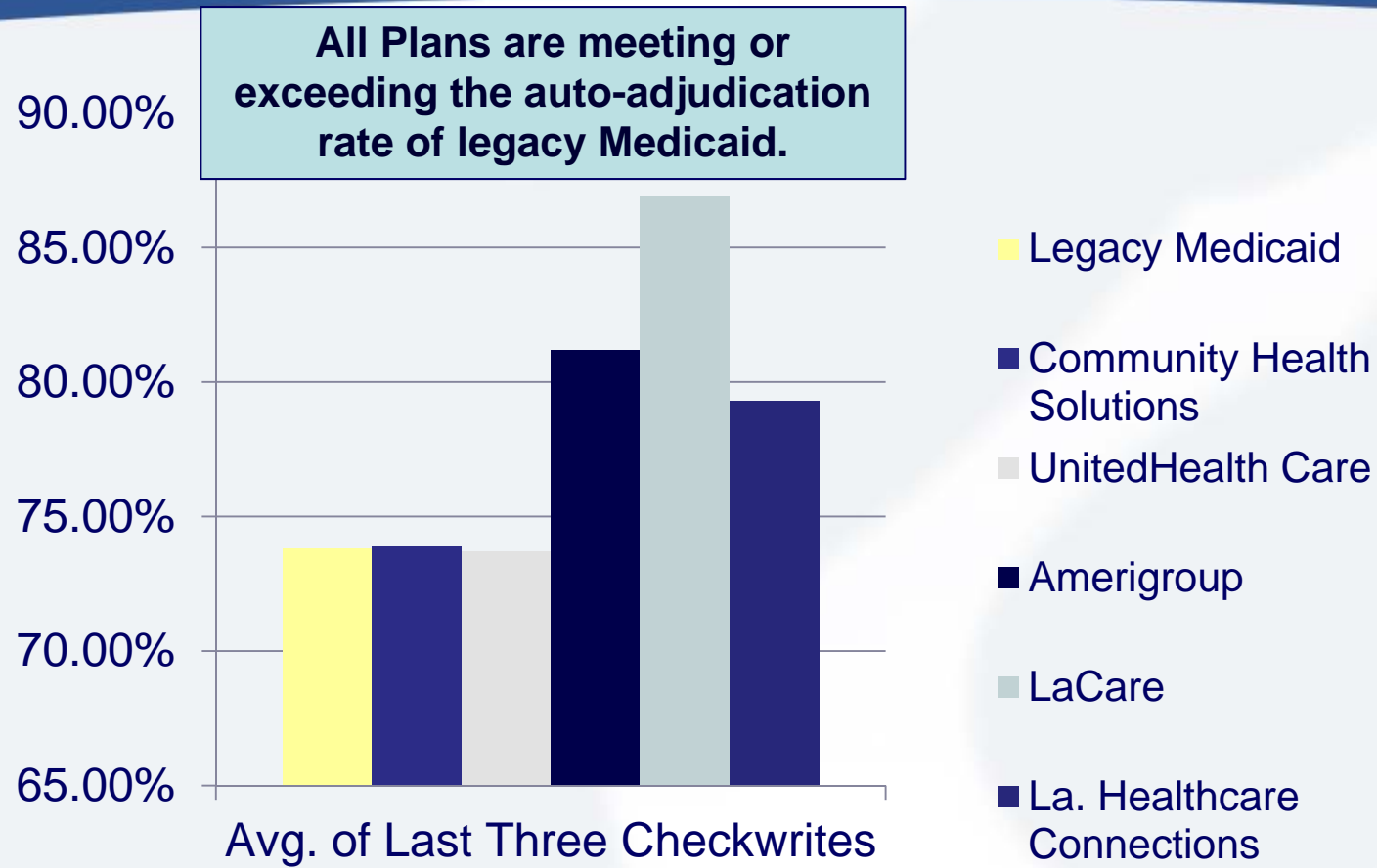
-- or --

Zip code:

[TOP OF PAGE](#)



3. Provider Payments



Nearly \$59.6 million in claims paid since launch:

- Shared plans: \$19.3 million
- Prepaid Plans: \$40.3 million



>>> behavioral health



La. Behavioral Health Partnership

March 1, 2012

A New Day for Behavioral Health in Louisiana.



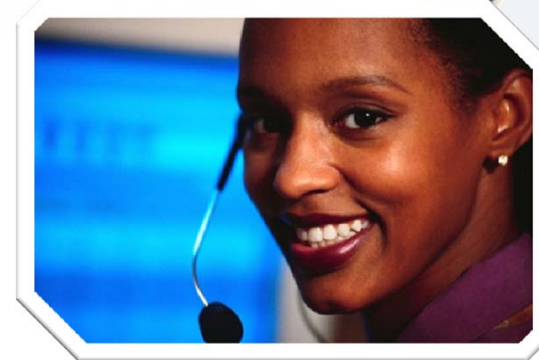
Who will we reach?

- At full implementation, we expect to be able to improve services for:
 - About 2,400 of our youth who are at greatest risk and have the most complex needs (CSoC).
 - About another 50,000 children and teens with behavioral health challenges.
 - About 100,000 adults with serious mental illness, major mental disorder, acute stabilization needs and/or addictive disorders.



Magellan's Role

- As the **Statewide Management Organization (SMO)**, Magellan is charged with:
 - Coordinating care
 - Fostering evidence based services
 - Increasing access
 - Improving quality
 - Measuring outcomes
 - Managing costs
 - Fostering reliance on natural and community supports



Simplicity



1-800-424-4399

Magellan Customer Service Hotline

1-800-788-4005

Magellan Provider Service Hotline

www.MagellanofLouisiana.com





Executing the HIT Agenda



Nov. 4, 2011 - Launch of the Louisiana Health Information Exchange (LaHIE)



La. Health Information Exchange



Regional Extension Center



Crescent City Beacon Community

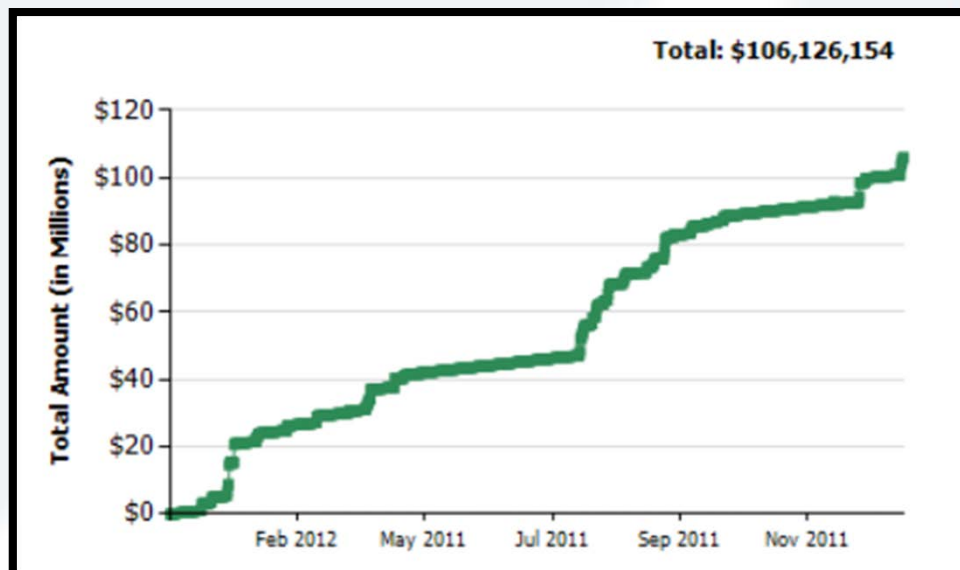
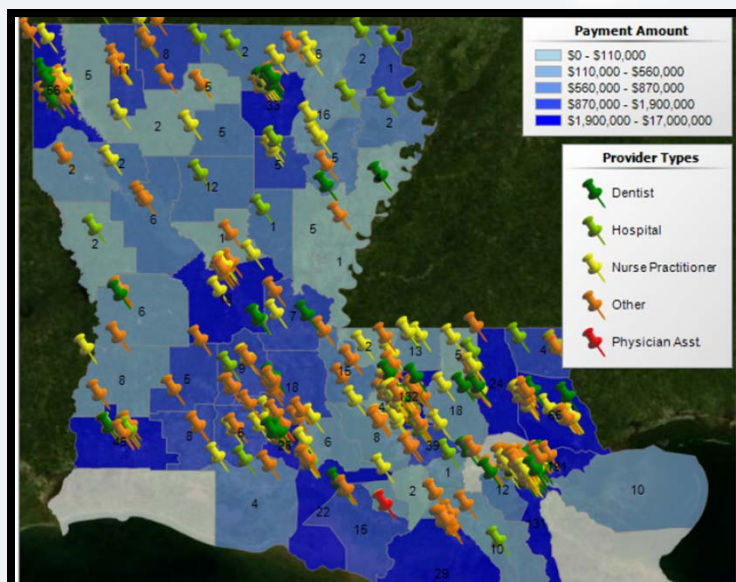


EHR adoption incentives



Leading the Way in EHR Incentives

\$106.1 million paid to 1,113 providers since January 2011.

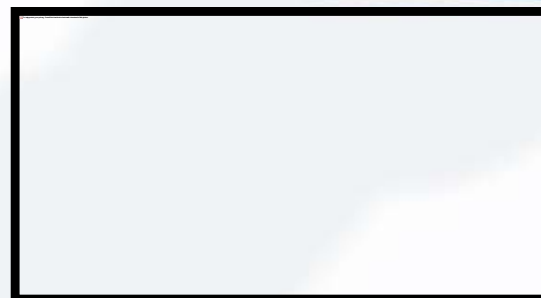


Provider Type	# of Providers	Payment Amount
Hospital	74 (6.6%)	\$84,408,234 (79.5%)
Physician	664 (59.7%)	\$13,838,170 (13.0%)
Nurse Practitioner	258 (23.2%)	\$5,427,500 (5.1%)
Dentist	103 (9.3%)	\$2,146,250 (2.0%)
Physician Asst.	14 (1.3%)	\$306,000 (0.3%)
TOTAL:	1113	\$106,126,154



Signed up, Going Live, MU Next

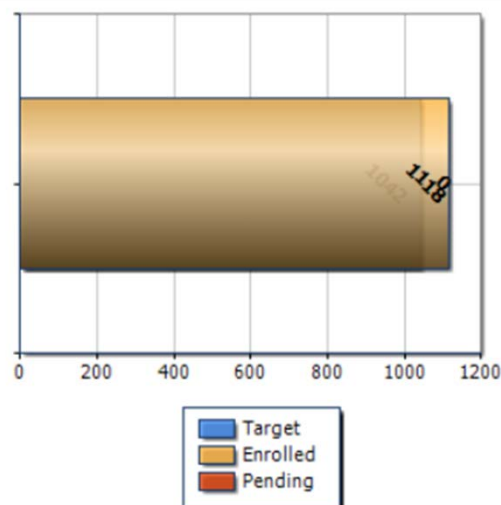
Last week, Winn Community Health Center became the first provider in the nation to receive a “Meaningful Use” Payment!



**Getting Started-
National Leader**

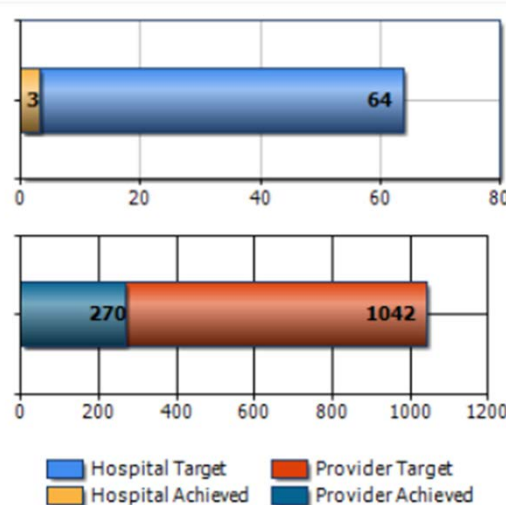
Exceeded Target

PCP's Signed Up

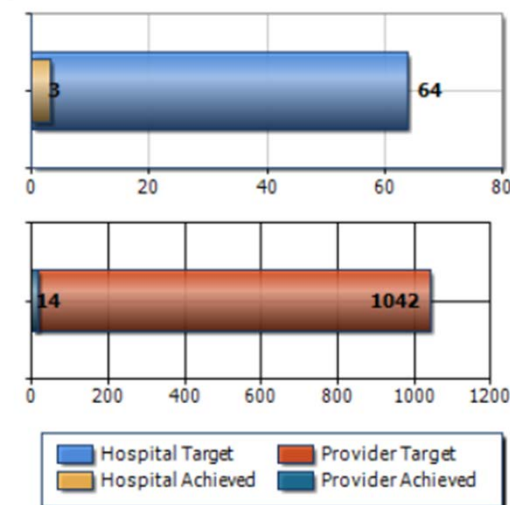


Steady Progress

Live on EHR



Meaningful Use Achieved



>>> birth outcomes



39 Weeks – Worth the Wait



100%

Percent of La. births
occurring in a hospital that
has signed a 39 week pledge.

Gaining ground:

- Woman's Hospital in Baton Rouge, can attribute a **20 percent decrease in NICU admissions** due to the change in practice.
- Fourteen hospitals voluntarily reporting data have gone from an average of **15 to 7 percent for elective deliveries prior to 39 weeks**

DHH has also launched an upgrade to its LEERS Vital Records system to capture from hospitals when and why an induced or C-section birth occurs before the 39th week.



Birth Outcomes

Key Strategies:

- 39 week initiative with robust data collection
- Behavioral Health Screening – LaHART
- Coverage and promotion of 17P



LaHART – Behavioral Screening

- Pilot program with 30 providers
- Innovative web-based tool that screens for tobacco, drug or alcohol use; signs of domestic violence; and depression
- Providers will assess, treat and refer - with ability to bill

La HART

Home Assessment Submitted Facility Finder Resources Admin

New Assessment

First Name:

Last Name:

Phone Number: Home: Cell: Work:

Date of Birth: (MM/DD/YYYY)

Due Date: (MM/DD/YYYY)

Medicaid ID:

1. In your life, which of the following substances have you ever used? (NON-MEDICAL USE ONLY)	No	Yes
1a. Tobacco products (cigarettes, chewing tobacco, cigars, etc.)	<input type="radio"/>	<input type="radio"/>



Results... But Not Finished!

Challenge Accepted!

Last month, we accepted a challenge from the March of Dimes to reduce prematurity rates 8% by 2014.

Hospitals reduce early births; newborn ICU cases drop 21%

BY MARSHA SHULER

Capitol News Bureau

Louisiana health chief Bruce Greenstein on Wednesday challenged other states to reduce premature births by 8 percent by 2014.

"It not only helps every baby being born but it helps our budgets" because babies won't have to spend time in expensive neonatal intensive care units, said Greenstein.

Greenstein issued the challenge during a news conference in which National March of Dimes President Dr. Jennifer L. Howse praised recent state efforts to improve birth outcomes.

She said Louisiana

ba
and
E
the
isia
stop
med

make a profound difference" in the health of babies born in the state.

The initiative began last April with 20 of the state's largest birthing hospitals voluntarily agreeing to try to prevent births until a woman's 39th week of pregnancy. Today all 58 hospitals have signed the pledge.

"Babies need to fully bake in the oven for 39 weeks," said Greenstein. "Healthy babies are worth the wait."

Six months into the initiative, the 20 original hospitals reported a 21 percent reduction in neonatal intensive care admissions, Greenstein said.

"That's 21 percent,"

weeks.

Greenstein said other efforts to improve birth outcomes are under way with implementation of Bayou Health, the state's private insurance industry-based health-care delivery system for the poor. Included are efforts to encourage women to make healthier choices such as not smoking or drinking alcohol and better coordinated prenatal care, he said.

LHA President John Matessino said the 39-week initiative is "a no brainer."

"There are some physician habits we have to change for a better outcome," said Matessino. "What does it take to wait a few more weeks?"

"You have never been pregnant before," Howse quipped, drawing laughter from the conference gathering. "I had pregnant thoughts," Matessino replied.





>>> kid's dashboard

Louisiana Kids' Dashboard

- Partnership between
 - Louisiana Supreme Court
 - DCFS
 - DHH
 - Education
 - Juvenile Justice
 - Workforce Commission
- Agencies hold themselves accountable to a succinct set of measurable and meaningful data indicators
- When complete, the dashboard will:
 - Serve as the policy guiding tool for Children's Cabinet
 - Be public facing



Where We Are Today

- Agencies working to develop content on indicators and website
- Contract with ULL to design the data interface
- Anticipated date of completion: late Summer
 - At that time, day-to-day management of the dashboard will be transferred under the control of the Children's Cabinet.





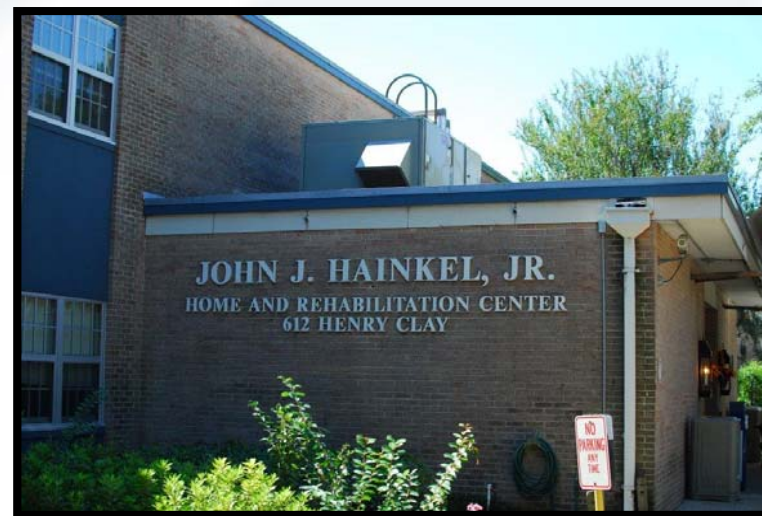
>>> redefining
government



Redefining our Role

1. Getting out of the business of direct care where opportunities exist

- From nine to three large state ICF-DDs through closures, consolidations and privatization – down to one in proposed budget
- Hainkel home in NOLA transitioned to private provider



Redefining our Role

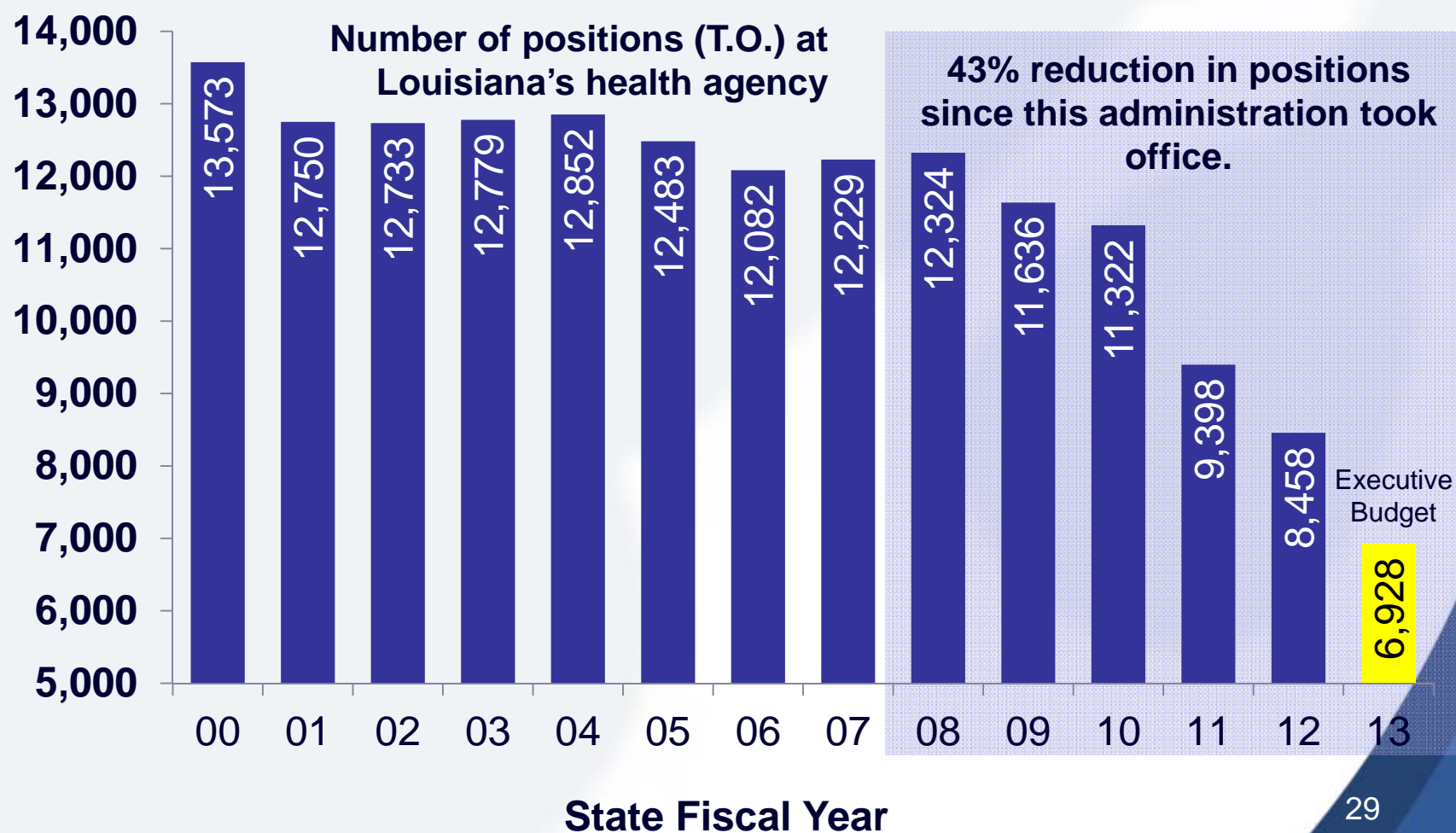
2. Right-balancing resources on community vs. institutional care

- In the last three years, DHH has transition 415 people from large state institution to community based settings, with 99% reporting to be satisfied with their new care setting.
- In addition, since Governor Jindal took office, we have added 2,175 additional slots to the New Opportunities Waiver.



Redefining our Role

3. Right-sizing staffing to reflect efficiencies, service priorities and census levels



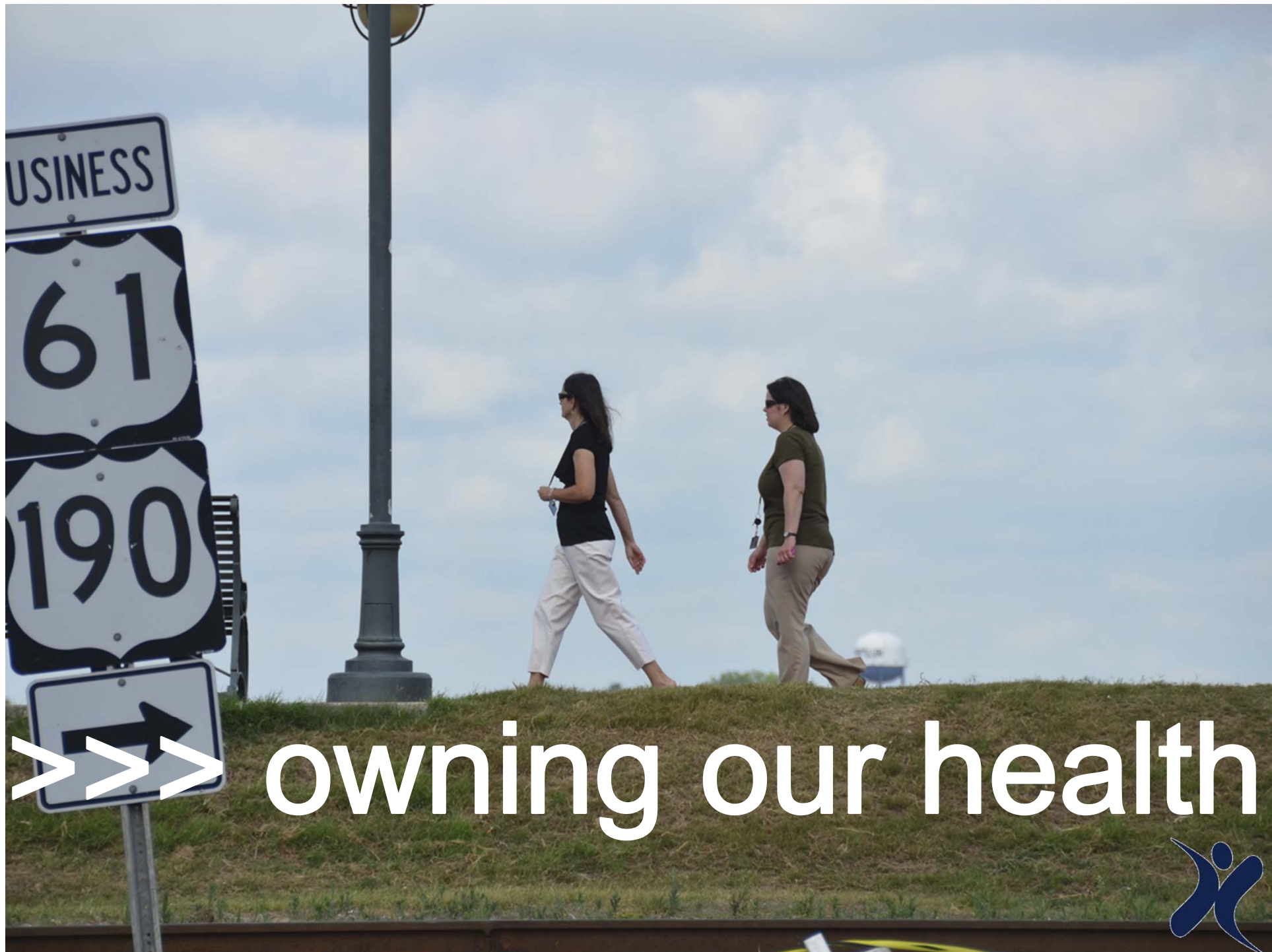
>>> systems
modernization



Investing in our Future

Major System Overhauls:





>>> owning our health

Our Greatest Challenge

Payment reform?

Delivery
System

No.

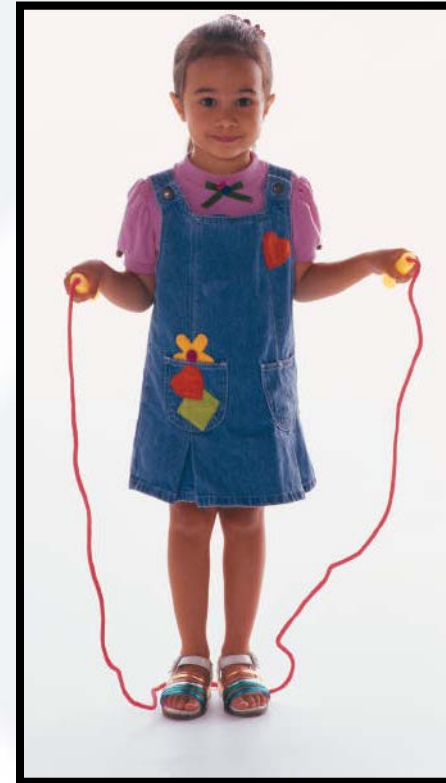


**How do we change
behaviors?**



Trouble by the Numbers

- 1,400 Louisianians will die each year from diabetes.
- In 2010, 31% of Louisianians were obese.
- In 2009, 29% of Louisiana children were overweight or obese.
- Less than half of Louisiana adults (43.5%) participate in moderate or vigorous physical activity.



We can't afford excuses.



Own the Problem – and the Solution!

- **Don't accept 49th!**
- **Own our challenge as a state**
- **Own your own health**
- **Take action today!**



Get a Game Plan

52 days til Hurricane Season!



Visit GetAGamePlan.org today to make sure you and your family are prepared.



Get A Game Plan – now available in the App Store



Available on the iPhone

App Store





**DEPARTMENT OF
HEALTH**
AND HOSPITALS

Transforming Health Care in Louisiana

A Look Back and a Path Forward

Bruce D. Greenstein, Secretary

